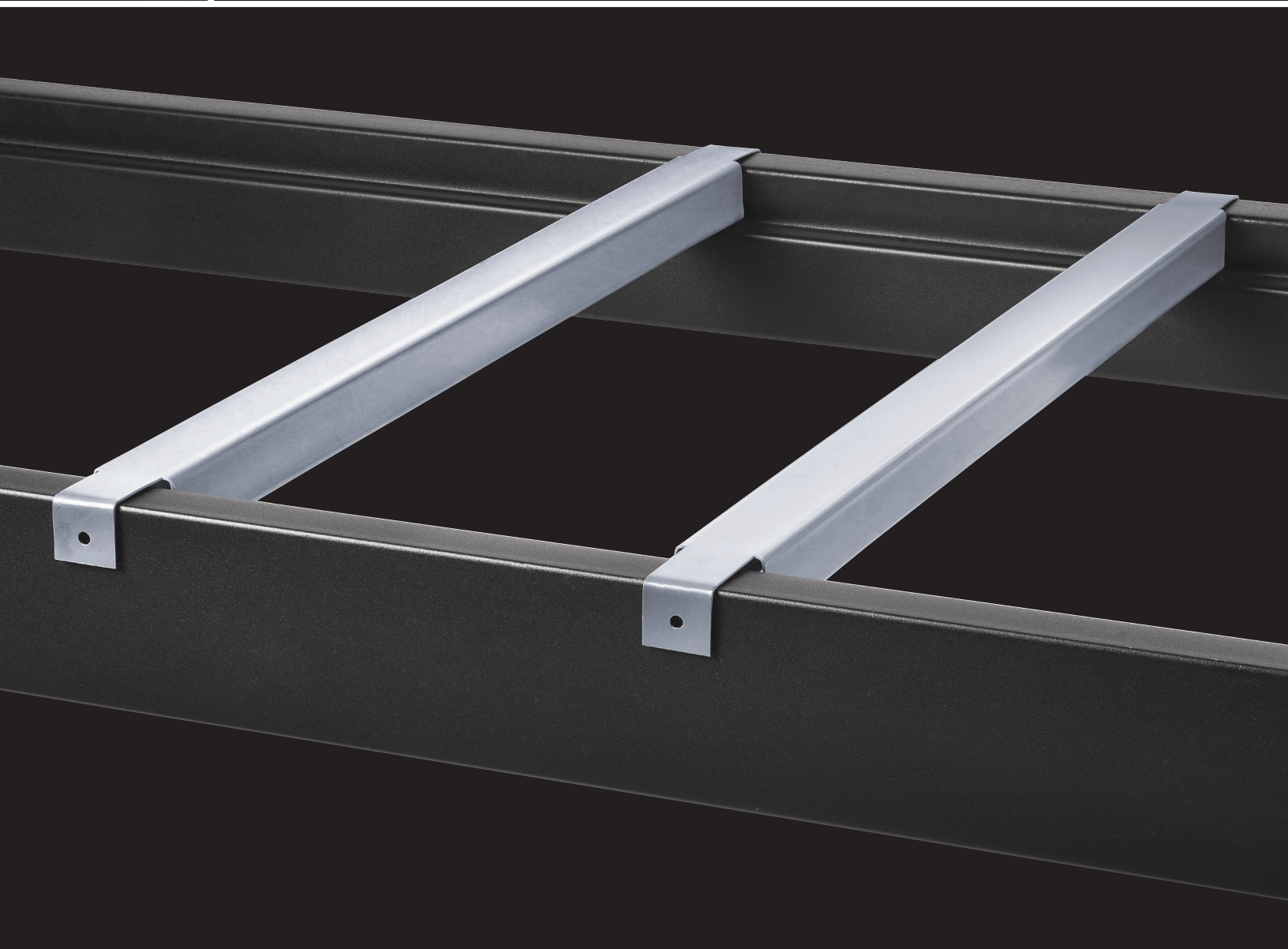




World XBar[®]

PALLET SUPPORT CROSSBARS

THE LARGEST SELECTION OF PALLET SUPPORT CROSSBARS IN THE WORLD



WWW.NET | SALES@WWW.NET | 888.650.WIRE (9473)

CHICAGO, IL | CHARLOTTE, NC | DALLAS, TX | HOUSTON, TX | ORLANDO, FL | SAN BERNARDINO, CA | SEATTLE, WA | WILLIAMSPORT, PA

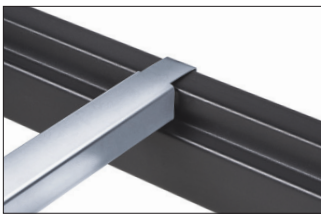
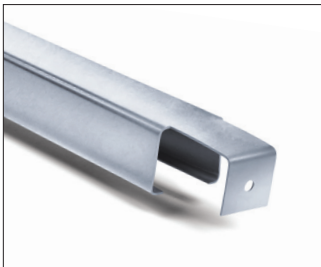
World XBar® Pallet Support Crossbars

World XBar pallet supports provide additional safety and security under your pallets when installed in selective pallet rack systems. World XBar pallet supports deliver superior strength, high quality and long-term reliability.

FEATURES AND BENEFITS:

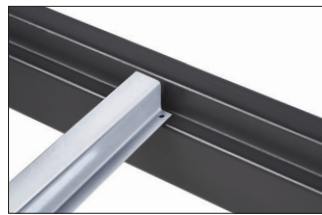
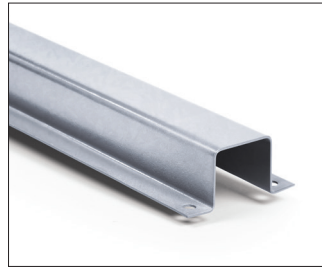
- › 16 ga. steel construction
- › High-capacity, four-corner roll-formed design
- › Tek screw holes standard
- › Custom lengths and designs available

Double Flanged Style



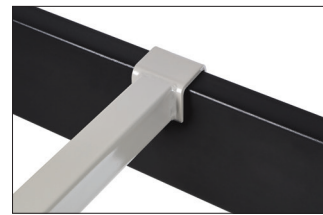
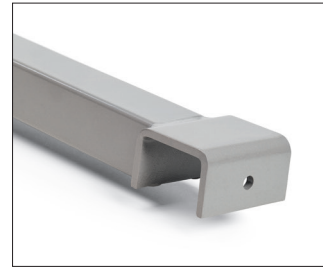
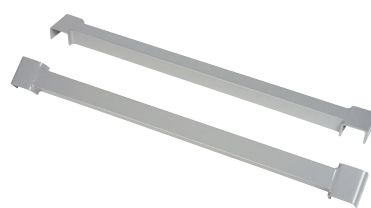
- › Helps reduce pallet rack beam spread
- › Double flanged design lays on top of pallet rack beam
- › Fits all 1 5/8" step beams
- › Easy installation, drops in place
- › High-quality galvanized finish
- › Optional powder coat finish

Hat Style



- › Flush fit design for 1 5/8" step beams
- › Most cost-effective World XBar option
- › Keeps beam face clear for labels
- › Installation with Tek screws recommended
- › High-quality galvanized finish
- › Optional powder coat finish

Structural Style



- › Designed for structural style beams
- › Heavy-duty, 1/4"-thick welded cuff design
- › Easy installation, drops in place
- › Durable powder coat finish standard
- › Optional galvanized finish

Specifications subject to change without notice.

WWMH.NET | SALES@WWMH.NET | 888.650.WIRE (9473)

CHICAGO, IL | CHARLOTTE, NC | DALLAS, TX | HOUSTON, TX | ORLANDO, FL | SAN BERNARDINO, CA | SEATTLE, WA | WILLIAMSPORT, PA

